

OCTOBER



Guest editors

297 **Neri Oxman**
The designer, architect, artist, synthetic biologist and MIT Media Lab star player on hacking nature to salve the planet

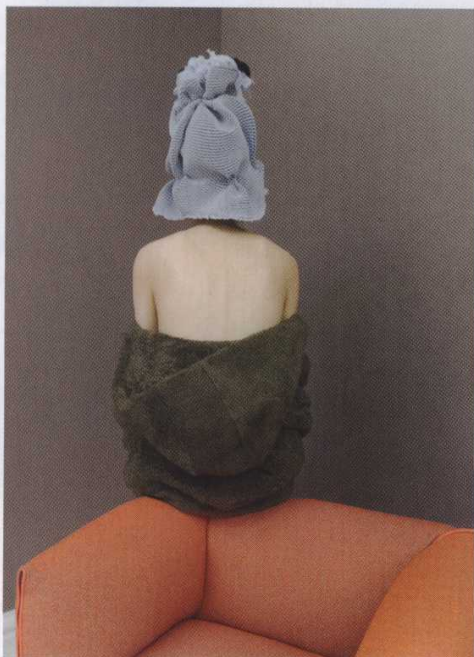
337 **Tomás Saraceno**
Arachnid experiments, an Aerocene launch, and plans to bounce sounds off the moon from the Earth-loving artist

↑
GUEST EDITOR NERI OXMAN, PHOTOGRAPHED BY NOAH KALINA, AT THE MASSACHUSETTS INSTITUTE OF TECHNOLOGY MEDIA LAB WITH SOL LEWITT'S BARS OF COLOR WITHIN SQUARES (MIT), 2007. SEE PAGE 297

ARCHITECTURE

- 128 **Wonder lab**
Mario Botta's Labiomista in Genk
- 165 **Pattern maker**
A new template for housing in India
- 176 **Brise block**
Jean Nouvel goes high in Marseille
- 192 **Trees lounge**
Forest dwelling in West Vancouver
- 200 **Long view**
Learning curves in rural Armenia
- 204 **Pole position**
6a Architects' fire station conversion

OCTOBER



JACKET, £2,520, BY YVES SALOMON. HAT, PRICE ON REQUEST, BY ISSEY MIYAKE. 'MIA' LOUNGE CHAIR, £2,388, BY FRANCESCO BETTONI, FOR MDF ITALIA, FROM ARAM. SEE PAGE 408

218 | **Off the grid**
Love and local lumber build a forward-thinking furniture factory in Honshu

228 | **Seoul revival**
A hanok house for today

390 | **On a roll**
The National Kaohsiung Center for the Arts hits a high note in Taiwan

ART

141 | **Making marks**
In spray paint and silkscreen, US artist Adam Pendleton's big ideas hit London

189 | **Lunar landing**
A Danish museum's new moon mission

214 | **History channel**
Kemang Wa Lehulere remasters the past

DESIGN

124 | **Speaking volumes**
Daniel Libeskind downsizes

136 | **A life less ordinary**
Gary Hustwit on filming Dieter Rams

182 | **Big bang**
David/Nicolas goes cosmic in Paris

240 | **Wine & Design**
Arist Liu Bolin delves deep for Ruinart

FASHION

146 | **High contrast**
Richly patterned haute joaillerie

175 | **Ellipse gloss**
A Patek Philippe classic shines again



'ELEMENTAL SPLIT UNIT' CHAIR IN MARBLE AND BRONZE, BY DANIEL LIBESKIND, FOR DAVID GILL GALLERY. SEE PAGE 124

OCTOBER



FASHION MAGNATE
BRUNELLO CUCINELLI AT
HIS HQ IN SOLOMEO,
UMBRIA, SEE PAGE 234

211 | **Heel spin**
The creative director bringing Parisian panache to a Chinese shoe brand

408 | **New positions**
Domestic drama with artist Giuseppe Palmisano

FOOD

434 | **Artist's palate**
Ulla von Brandenburg's orangettes

FRONT OF BOOK

099 | **Newspaper**
Beefy West Coast eateries; a cold-water surfing kit; clean-air carparks; and a hip new waterfront in Amsterdam

122 | **The Vinson View**
Picky Nicky's baby cashmere quest

GROOMING

225 | **Source code**
Pure ambition from a London perfumer

INTELLIGENCE

119 | **Back story**
Sportswear giant Fila is looking to its past to build its future

168 | **Road warrior**
Prince Charles takes us for a spin in his cheese-and-wine-fuelled Aston Martin

234 | **Renaissance man**
Brunello Cucinelli – cashmere king and humanist – and his happy Umbrian valley

INTERIORS

400 | **In the market for...**
Armchairs for lounge lovers

OCTOBER



↑
LIRAN WIZMAN AND PIERO LISSONI AT THE MILENESE PALAZZO
THEY ARE TRANSFORMING INTO AN EDITION HOTEL, PAGE 292

422 | Tropical fever
Sketching out a South American bolthole

MEDIA

386 | Subscribers since... 1996
Joe Gebbia makes room for Wallpaper*

421 | WallpaperSTORE*
Refined design delivered to your door

TRAVEL

282 | Checking in
A pared-back, art-filled Puglian palazzo

285 | Departure info
Secluded suites in Santorini; a barn
stormer in Zhejiang; cocktails in Rome;
and rooftop onsens in Mexico City

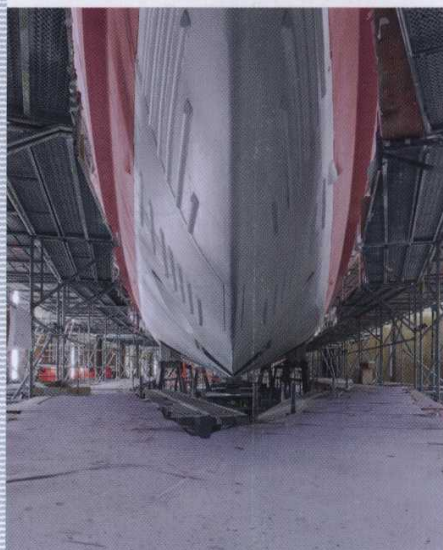
292 | Past masters
Hotelier Liran Wizman and architect
Piero Lissoni on restoration theatre
at the future Milan Edition

RESOURCES

432 | Stockists
What you want and where to get it

YACHT SPECIAL
Wallpaper's take on style
and substance at sea

Wallpaper* **NEW WAVE**
*Float your luxury boat with our shipshape yacht special



263 | Sea giants
Incredible hulls in the making
at a Dutch superyacht shipyard

273 | Small wonder
An explorer yacht is the SUV of the seas

277 | News
Riva upsizes; a superior sub; electric
dreams; and a racing yacht's BMW hue